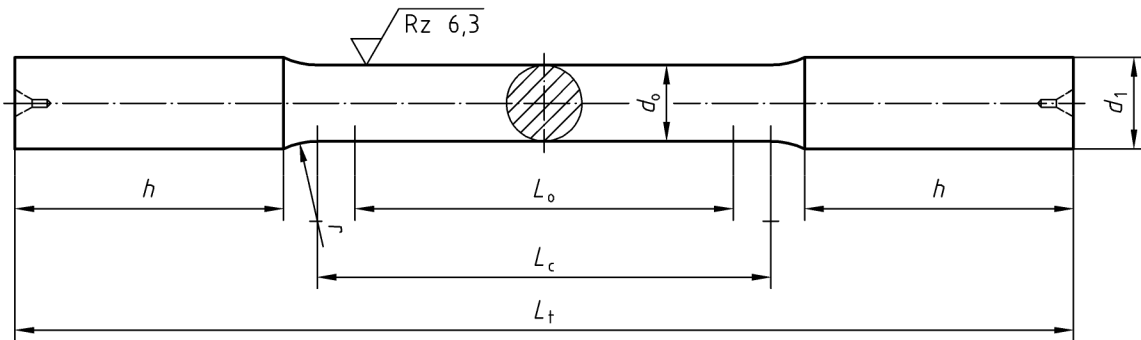


4.2 Type A test pieces



Key

- d_0 test piece diameter
- d_1 diameter of gripped ends ($\geq 1,2 d_0$)
- h length of gripped ends
- L_0 original gauge length ($L_0 = 5 d_0$)
- L_c parallel length ($L_c \geq L_0 + d_0$)
- L_t total length of test piece

Figure 1 — Type A test piece, of circular cross-section, with smooth, cylindrical ends for clamping in wedge grips

Designation of a type A test piece with a diameter $d_0 = 12$ mm and original gauge length $L_0 = 60$ mm:

Tensile test piece DIN 50125 – A 12 × 60

Table 2 — Examples of dimensions for type A test pieces

Dimensions in millimetres

d_0	L_0	d_1 \geq	r min.	h min.	L_c min.	L_t min.
4	20	5	3	16	24	60
5	25	6	4	20	30	74
6	30	8	5	25	36	92
8	40	10	6	30	48	115
10	50	12	8	35	60	138
12	60	15	9	40	72	162
14	70	17	11	45	84	186
16	80	20	12	50	96	210
18	90	22	14	55	108	233
20	100	24	15	60	120	255
25	125	30	20	70	150	310