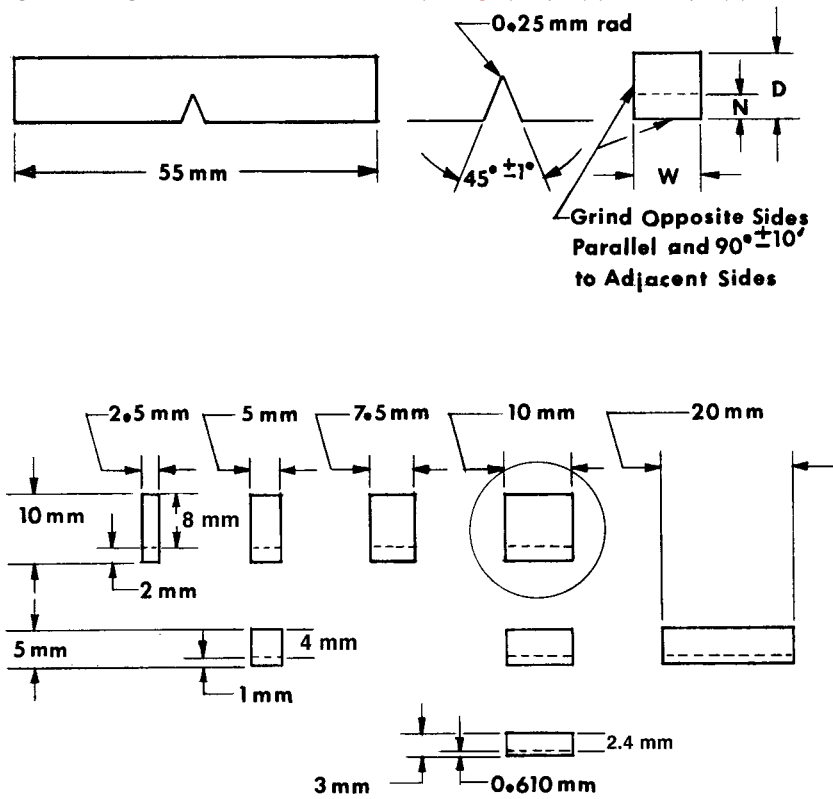


On sub-size specimens the length, notch angle, and notch radius are constant (see Fig. 1); depth (D), notch depth (N), and width (W) vary as indicated below.



NOTE 1—The circled specimen is the standard specimen (see Fig. 1).

NOTE 2—Permissible variations shall be as follows:

Cross-section dimensions	$\pm 1\%$ or ± 0.075 mm, whichever is smaller
Radius of notch	± 0.025 mm
Ligament length	± 0.025 mm
Finish requirements	$R_a = 2\ \mu\text{m}$ on notched surface and opposite face;
	$R_a = 4\ \mu\text{m}$ on other two surfaces

FIG. A3.1 Non-Standard Charpy (Simple-Beam) (Type A) Impact Test Specimens